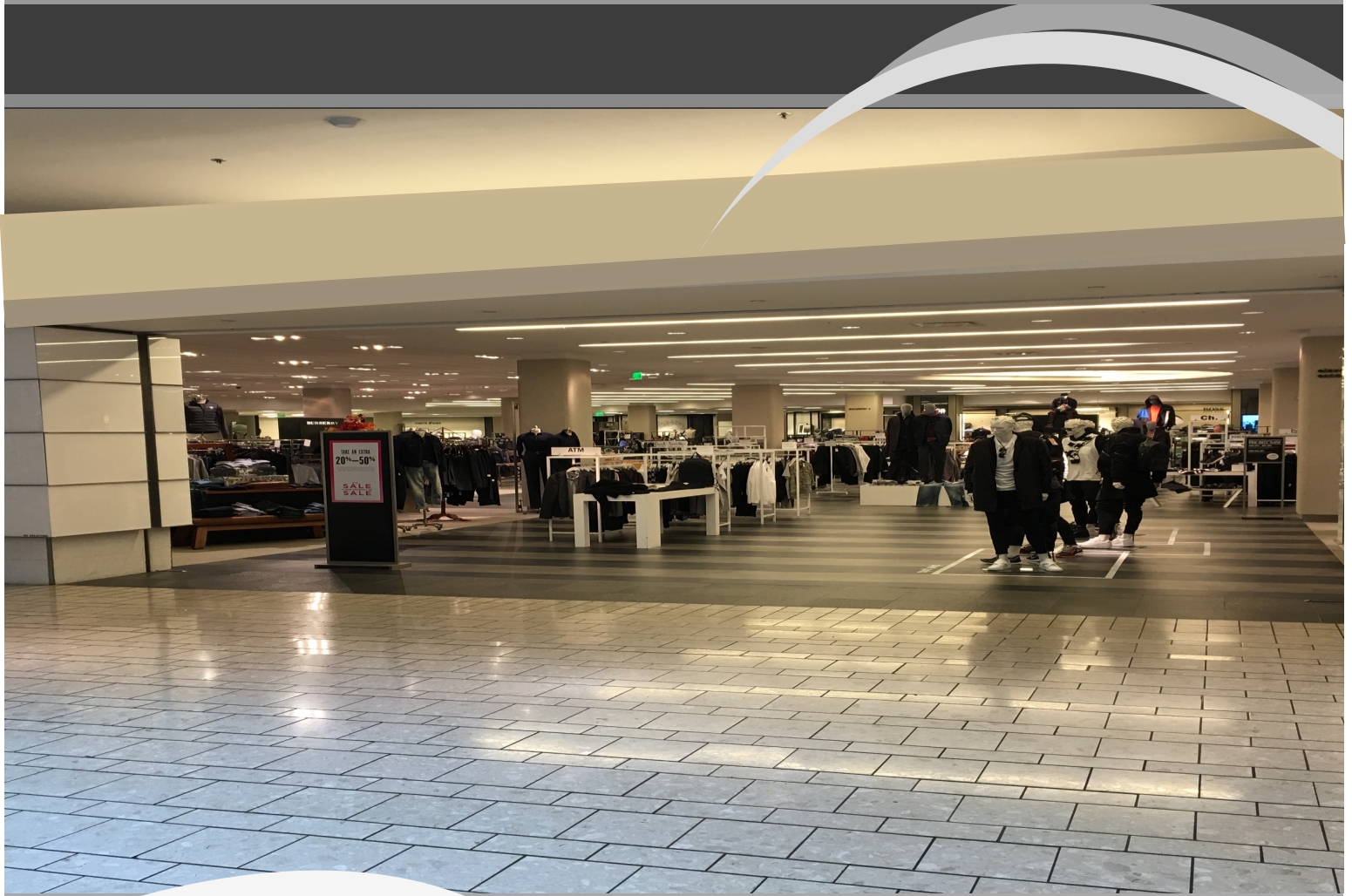


# WG Security Products, Inc.



Concealed Systems  
Pedestal Systems  
Hard Tags



Partner for Profit



## Wi-Fi Concealed Systems

WG's concealed systems has superior performance and represents a major enhancement to 58 kHz EAS systems. This "variable loop" floor system will calculate the perimeter of an opening and calibrate the electronic settings for optimum tag detection.

## Wi-Fi Floor Guard or 2A System

Wide luxurious entrances are welcoming to customers. Wi-Fi Floor Guard is a revolutionary floor based EAS system designed to be completely invisible with robust performance. The antennas are buried into the subfloor and multiple units can be installed from end to end, ensuring maximum detection range which makes it ideal for stores with wide exits. The system's ultra-compact design allows for installations in multiple story businesses. Wi-Fi Floor Guard features an integrated sealed antenna structure, thus eliminating the need for extra antennas around the perimeter, making it a truly 100% invisible system.

## Wi-Fi Floor Guard Hybrid System

Many of our customers have progressive product protection needs or rigorous detection requirements, to meet those demands WG has developed the Wi-Fi Floor Guard Hybrid. A high performing system combining our Wi-Fi Floor Guard and Sky Guard Loop technology.

## Wi-Fi Sky Guard Loop System

The Wi-Fi Sky Guard Loop offers theft protection, while maintaining the aesthetics your company is striving to achieve. Just as it was designed by your company culture. It is frictionless to the customer, because the Loop system is invisible and discreet. The complete Wi-Fi system technology can be fully integrated into the portal and the electronics hidden in the ceiling. Wi-Fi Sky Guard Loop is concealed but just as effective as visible systems but superior traditional pedestal EAS systems that have been proven to prevent theft.

## Features

- Optimum detection range
- Active turbo antennas with improved noise reduction
- Patented noise cancellation technology
- Digital Signal Processing (DSP) Electronics
- Alarm volume control
- Optional remote external alarm



## Remote tuning

WG's Wi-Fi remote tuning feature for EAS Systems creates a cost effective benefit for end users without any additional infrastructure cost. Just connect the system to your Wi-Fi Network or we can connect your store to a mobile hotspot. Most service calls will no longer require a technician to be on site to resolve service calls. When you place a service call, the hotline engineer will log in to your system to see if there are tags in the field, noise or other issues that can be managed remotely. The hotline engineer will remotely reconfigure your system to perform at its optimum.



## EAS Pedestal Systems

### Wi-Fi Premier Guard

Premier Guard is WG's line of EAS systems, designed to deliver both aesthetics and performance. It's compatible with all 58 kHz tags, AM tags and labels. It is unique and sleek looking, that works within any company culture. The Premier Line offers a selection of clear acrylic pedestal designs with three different color trims (White, Gray and Black). Pedestals are available in various sizes, depending

### Wi-Fi Ad Guard

Ad Guard is an effective detection system that is compatible with all 58 kHz tags, AM tags and labels. Ad Guard's sleek design not only provides an aesthetically pleasing appearance, but also offers the retailer an opportunity to increase sales through marketing. Ad Guard is designed to include space on both sides of the pedestal for advertising panels, which are easily adaptable, to meet current marketing promotions or company messages

### Wi-Fi Door Guard

Distinctively designed for any decor, Wi-Fi Door Guard delivers functional operational superiority over EAS pedestal systems. Wi-Fi Door Guard is available in gray, black and white and upon customer request, customizable with your company logo or any other visual requirements. As its name suggests Door Guard is attached to the door frame or glass store front.

## Features & Benefits

- Superior detection range
- Fully compatible with all AM tags and labels
- Comes in various sizes, differing only in detection distance
- Patented noise cancellation technology
- Jammer detection
- Optional remote external alarm
- Custom graphics for Ad Guard can be inserted into both sides

# EAS Hard Tags

**Teardrop Tag** is simply the most elegant hard tag in the industry today. Its patented oval and shelled construction makes unauthorized removal nearly impossible. Perfect for lingerie, delicate fabrics, high end apparel and petite garments.

**Micro Shell Tag** captured all of the features of the full-size Shell Tag, but with a smaller footprint for more delicate merchandise. This ergonomically correct design makes Micro Shell one of the most effective, tamper-proof tags in the industry.

**Micro Shell Ink Tag** is designed to provide added anti-theft measures by incorporating benefit denial. Tampering with the tag will cause the ink reservoir to break, permanently staining the article. The tag incorporates a ball clutch mechanism that is detached with a standard super lock magnetic detacher. Both versions are available in 58 kHz and 8.2MHz.

**SuperSensor Tag** SuperSensor uses a larger ferrite rod allowing it to achieve an extra two feet of detection range with any 58 kHz system. For smaller items, such as infant and toddler clothing, we provide the Mini SuperSensor, which combines all the benefits of the SuperSensor into a smaller tag. Extra detection, lightweight, larger ferrite, and compatibility with Super Tag detachers.

**Pencil Tags** Adaptable to nearly every style and type of garment, the Pencil Tag is simple to apply and remove. A super locking mechanism within the tag requires a strong magnetic detacher to remove, making conventional shoplifting methods difficult. Pencil Tags come in three sizes to suit your merchandise: Micro, Mid, and Super. A selection of three colors (black, white, and gray) increases

**Seal Tag** "Wardrobing" is a new fraud phenomenon which concerns online and retail stores simultaneously. Online orders as well as In-store purchased merchandise are taken home to try on and or possibly worn to a social event and then returned for a full refund. The Seal Tag was designed to prevent the return after being wore to an event; which reduces return rates and the cost of writing off used merchandise.



## WG Security Products, Inc

591 W. Hamilton Ave Suite 260  
Campbell, CA 95008 USA  
408 241 8000  
408 559 2073

[www.wgsppi.com](http://www.wgsppi.com)

Partner for Profit